

# PHILIP KUBICKI

## How to Fix Missing Detent

First, in case you are interested, we'd like to explain how the detent works and to explain why it can suddenly go missing. If you are in a hurry, you can skip to the How to Fix section that starts with 1).

**How it Works** - There is a bump built into the bottom of the pan pot case (see pic 1 on page 2). The bottom side of the pan pot wiper rides around on top of the bump until it reaches a hole (detent drop slot) that is cut into the bottom of the pan pot wiper (see pic 2 on page 2). The slot is located at the halfway mark of the wiper's travel, and it allows the wiper to drop down onto the floor of the case as the bump recesses into it. It's a very small drop but it's enough to allow you to feel it.

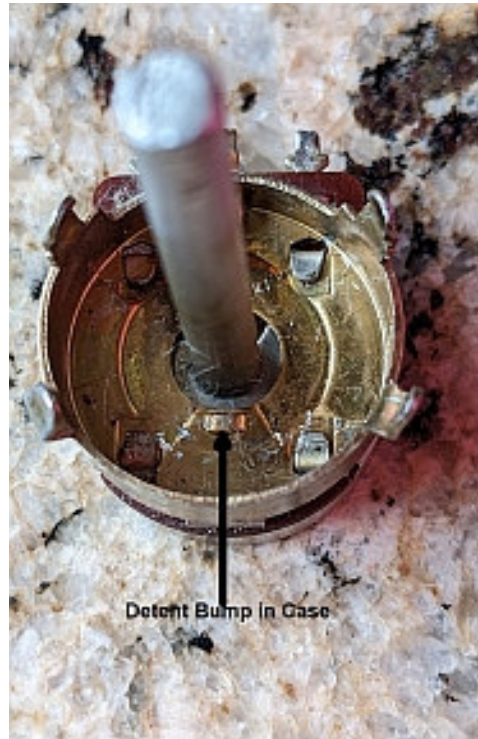
**How it Disappears** – There are two ways the detent can disappear. One is when the pan pot is not in the detent position when the lower knob gets installed. When it's not in detent, it is in the raised position on the bump, meaning the lower knob can become attached too close to the bottom of the inner shaft bushing, thus preventing the wiper from being able to drop to the case floor when the bump gets to the detent drop slot. The second way it can happen is during transport. We never tightened down the knob set screws too hard or there is a risk that the pot shaft will be crushed out of round. If the bass gets laid on its face during shipment, the pressure exerted on the upper knob can cause it to press down onto the lower knob which then can move too close to the bottom of the inner shaft as described above.

**How to Fix:**

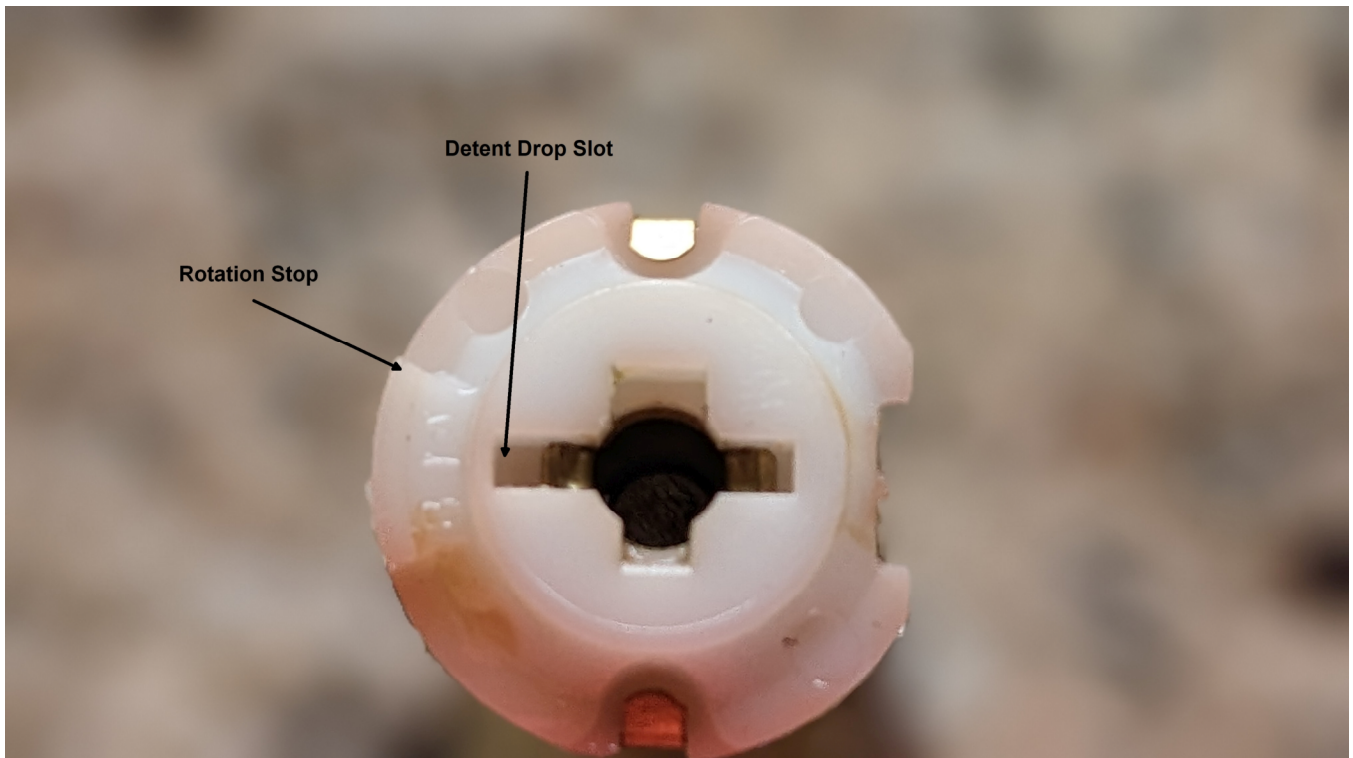
- 1) Remove both the Upper and Lower Control Knobs.
- 2) Make sure the Pan Pot is in the detent position. Re-install the Lower Knob so that it is not all the way down on the shaft. Do not tighten the set screw excessively or you will crush the inner shaft bushing out of round and it could interfere with the volume shaft.
- 3) Before re-installing the Upper Knob, turn the Pan Pot so it is out of the detent position. Re-install the Upper Knob, so it is slightly raised up off the Lower Knob. This is so that when the Lower Knob raises up out of the detent position, it doesn't engage the Upper Knob and turn it at the same time.

# PHILIP KUBICKI

Pic 1



Pic 2



*207 Governors Rd, Brookfield, NH 03872 Ph (805) 963-6703*